

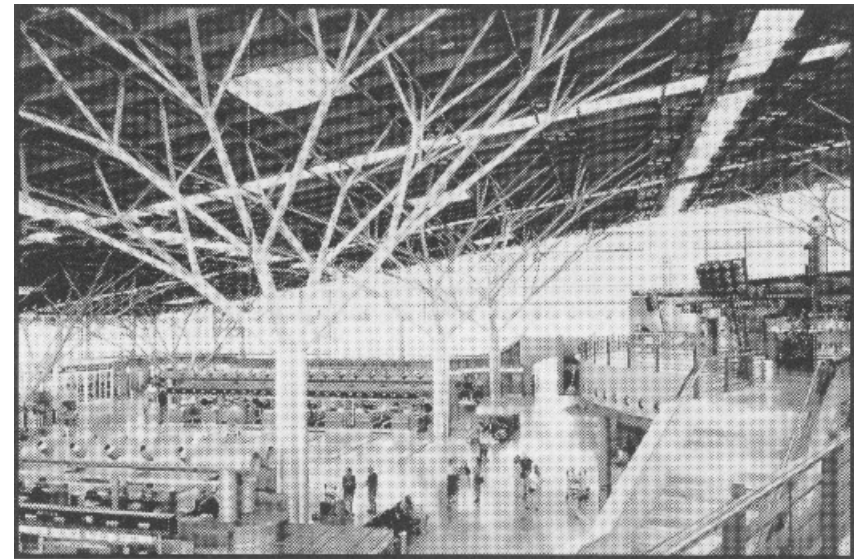
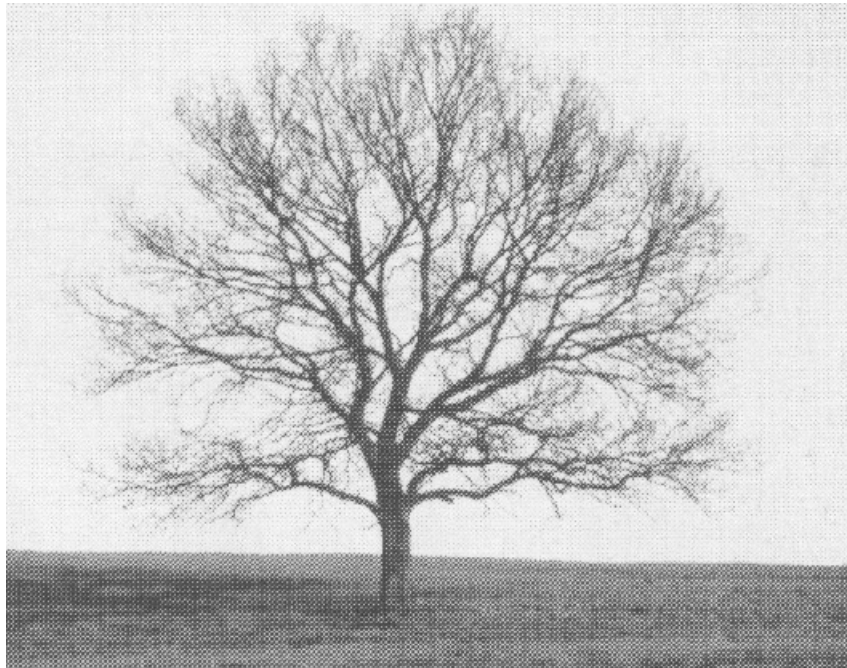


## Kurzübersicht über das folgende Kapitel

- Natürliche Konstruktionen
- Verästelungen
- Gestaltoptimierung
- Selbstorganisierte Strukturen
- Proterosuchus

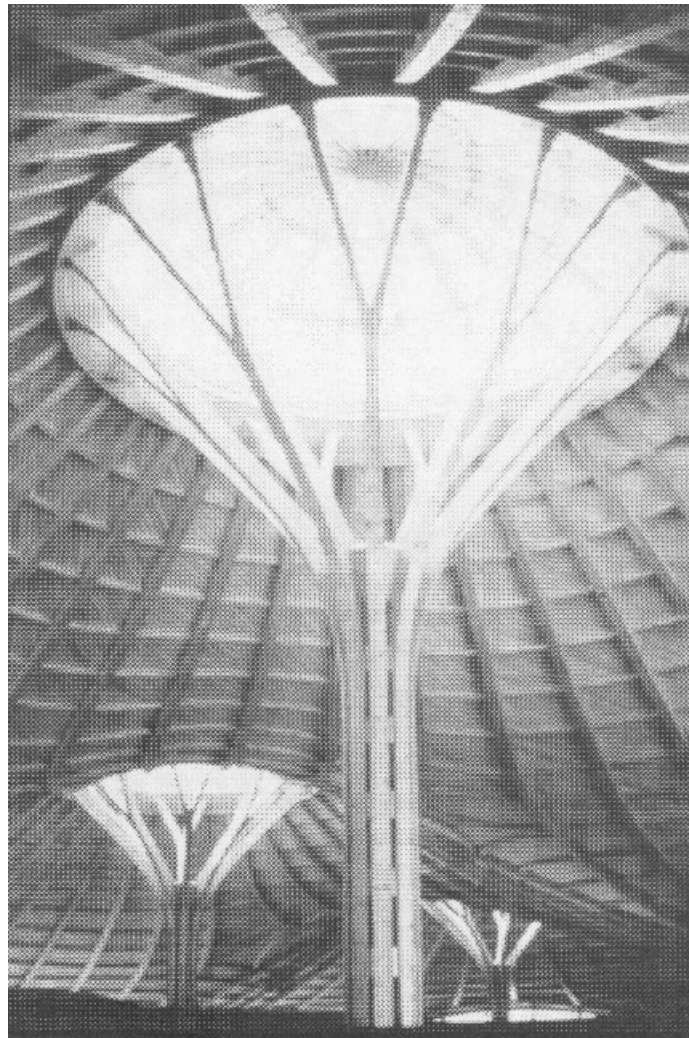






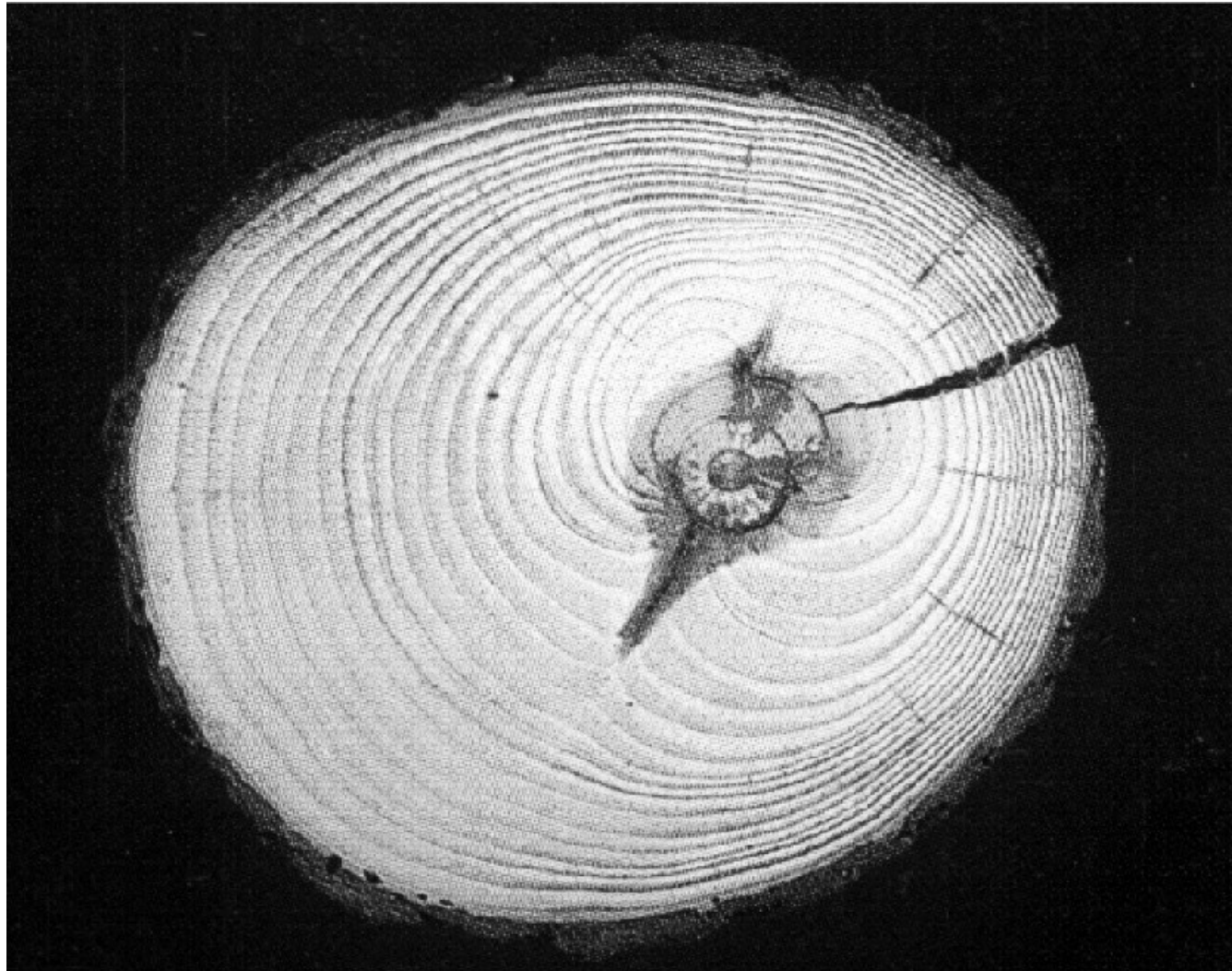
Flughafen Stuttgart





Schwimmbad in  
Bad Dürkheim

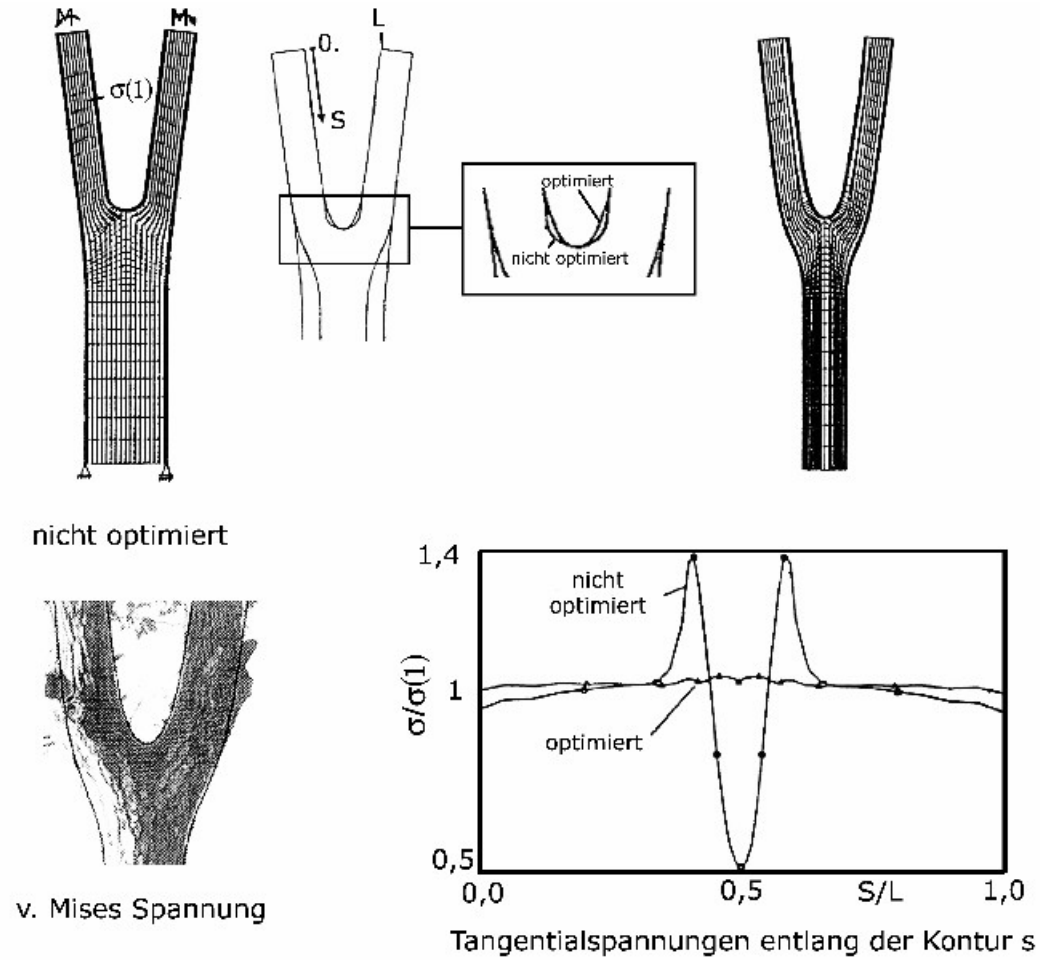






# Spannungsverteilung

# Bionik I





Designvorschlag



SKO:  
Entfernung nicht  
tragender Bereiche  
(Leichtbau)



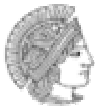
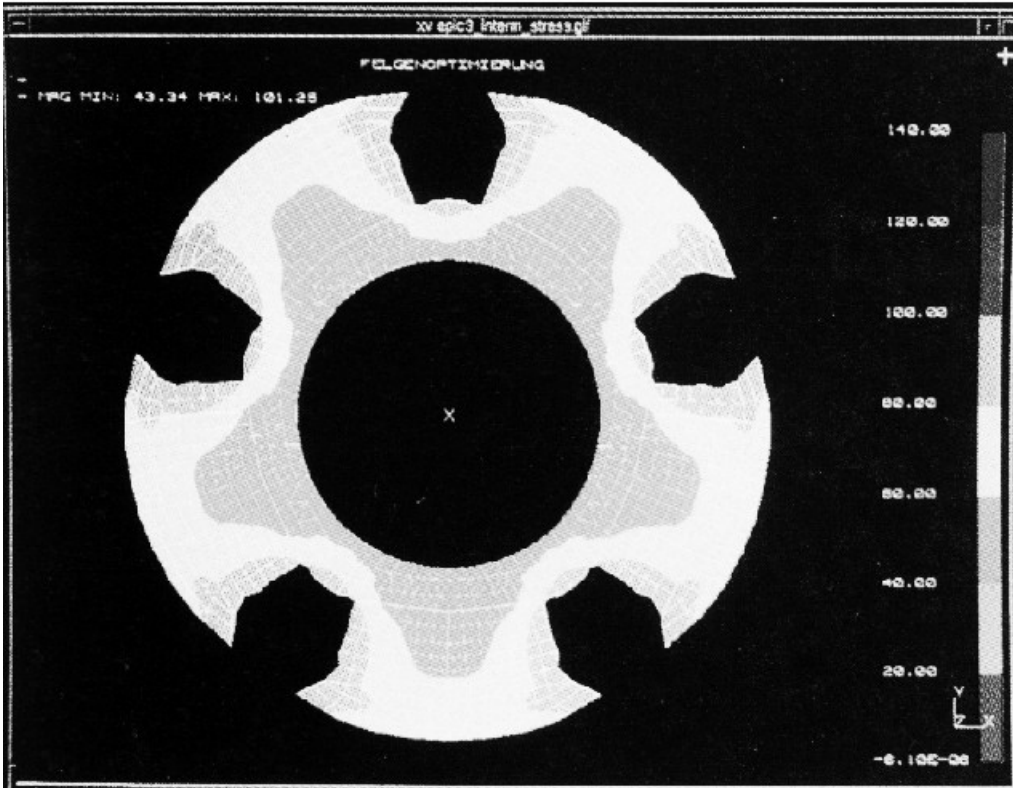
CAO:  
Gestaltoptimierung  
(Dauerfestigkeit)



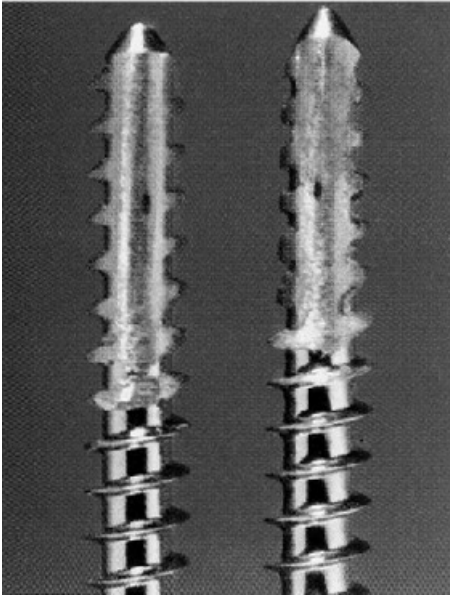
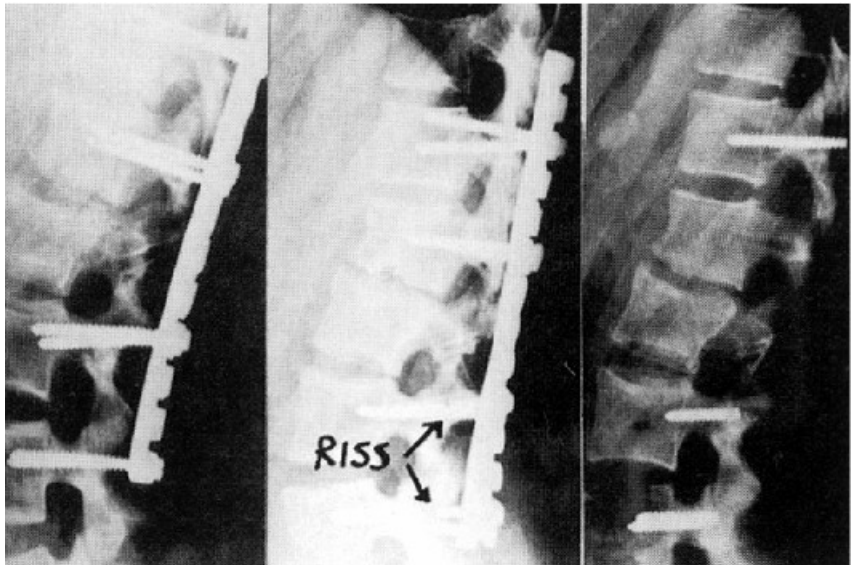


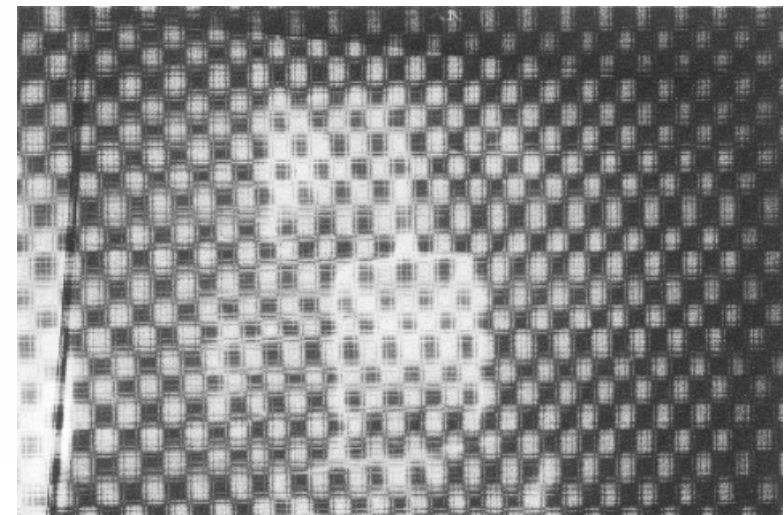
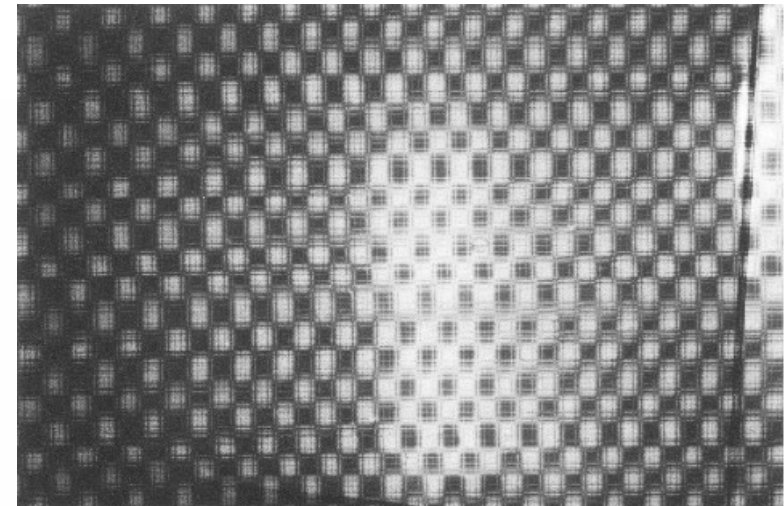
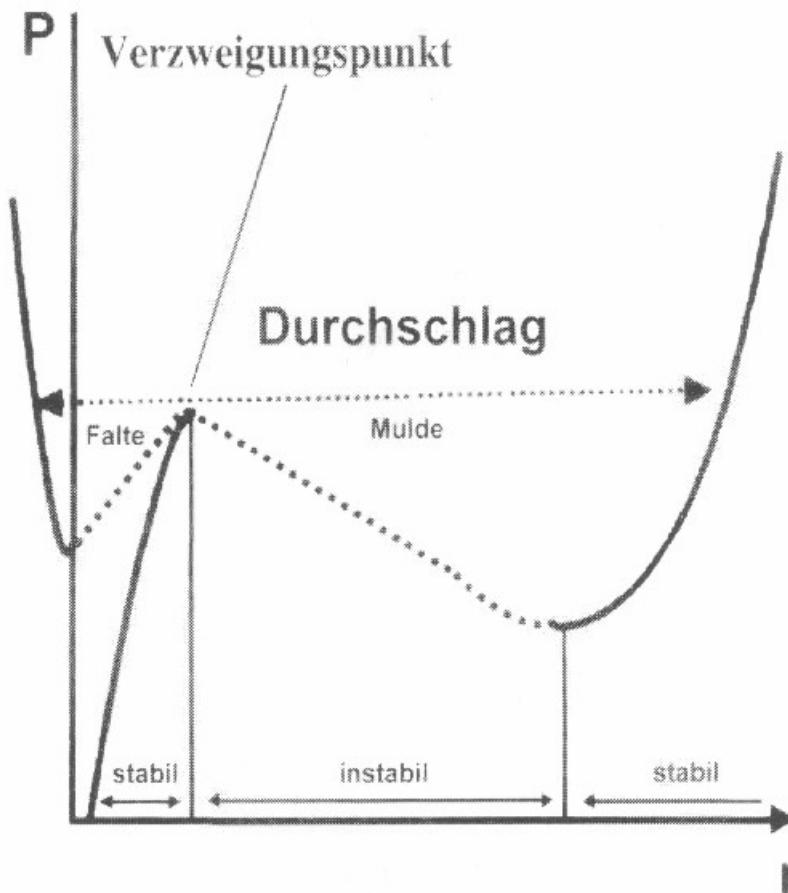
# Gestaltoptimierung

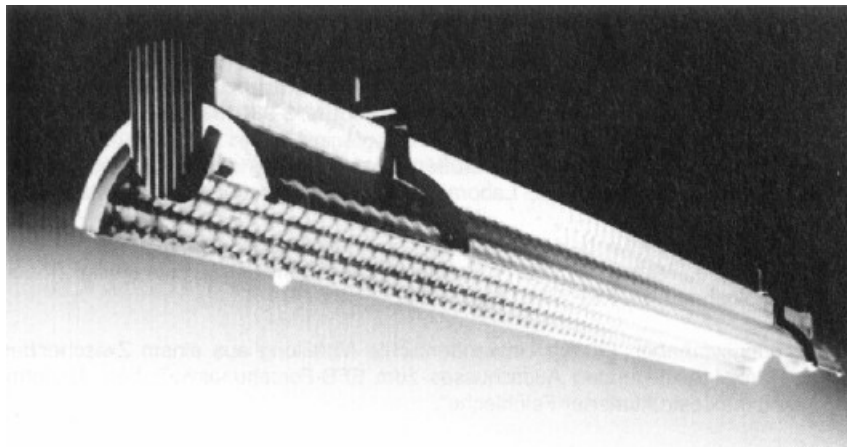
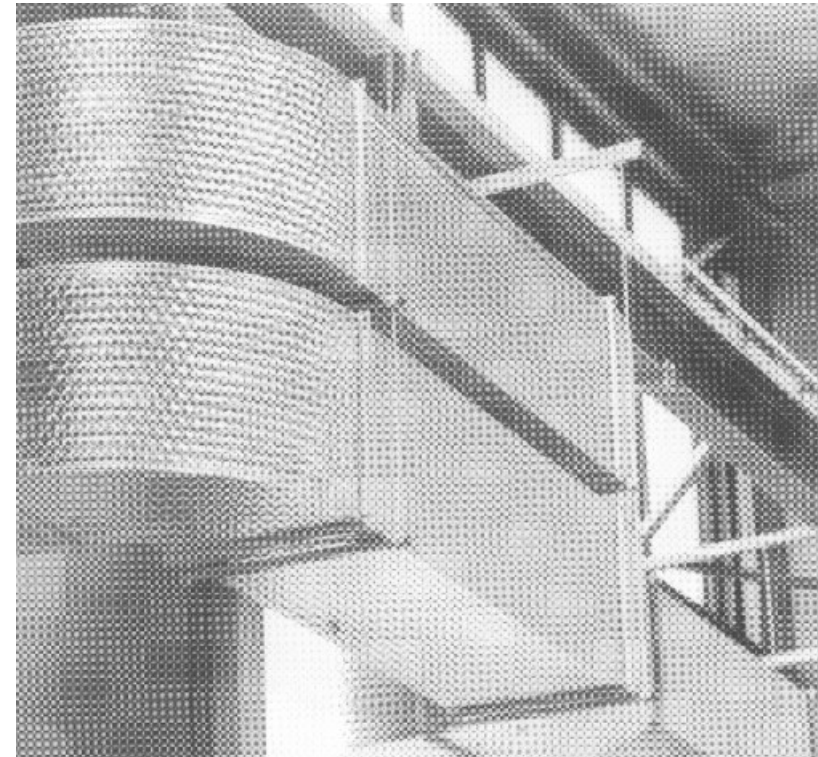
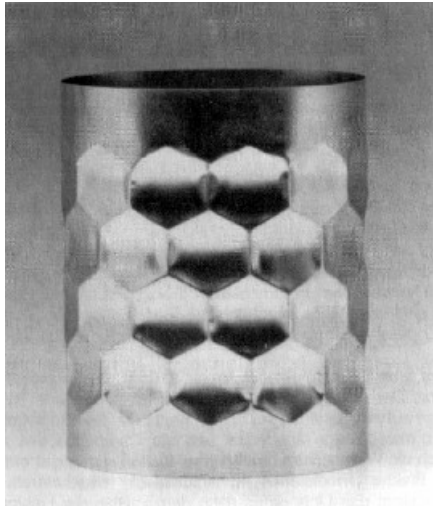
# Bionik I







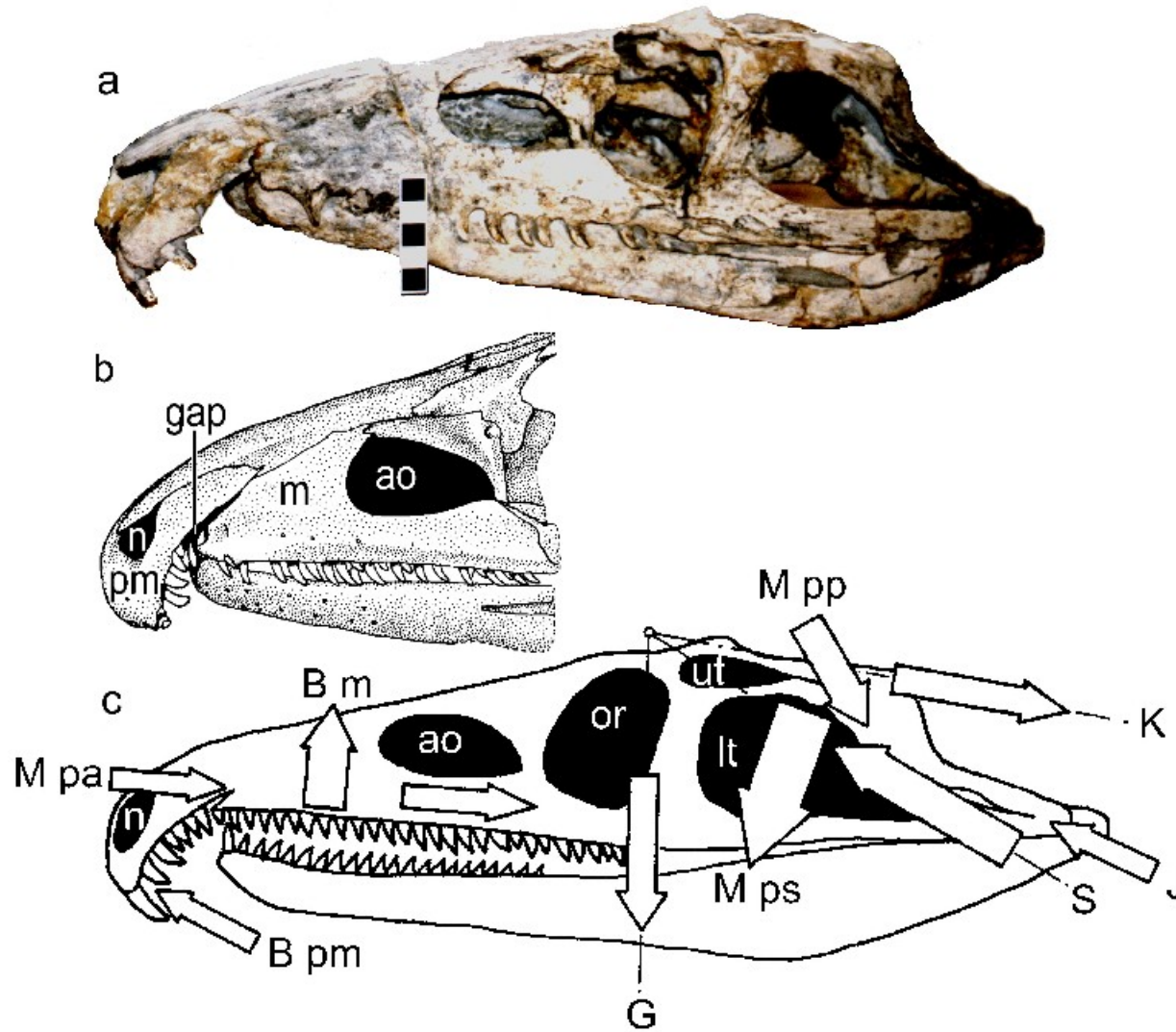


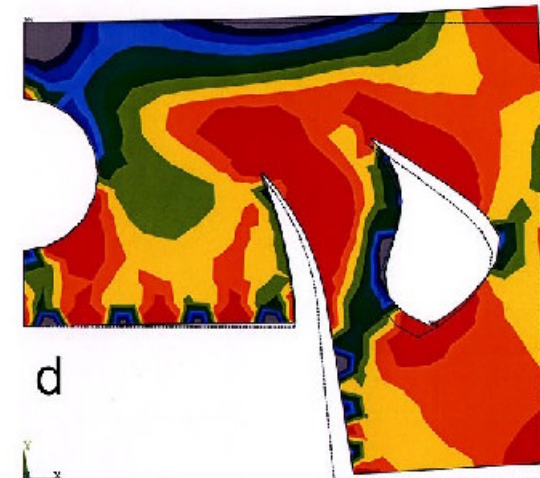
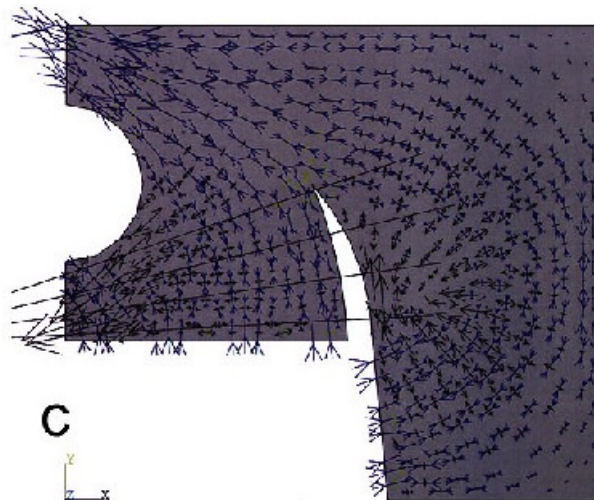
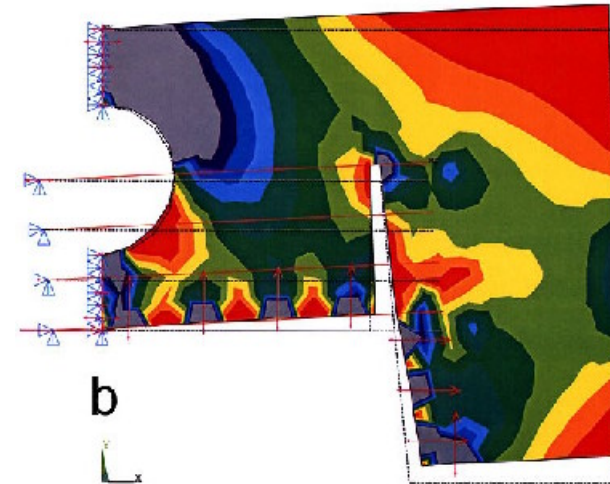
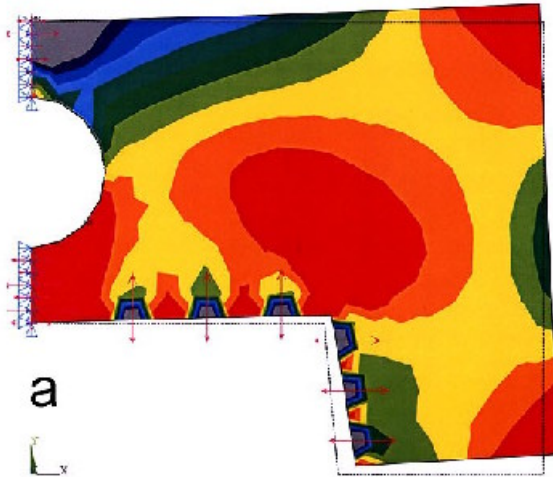


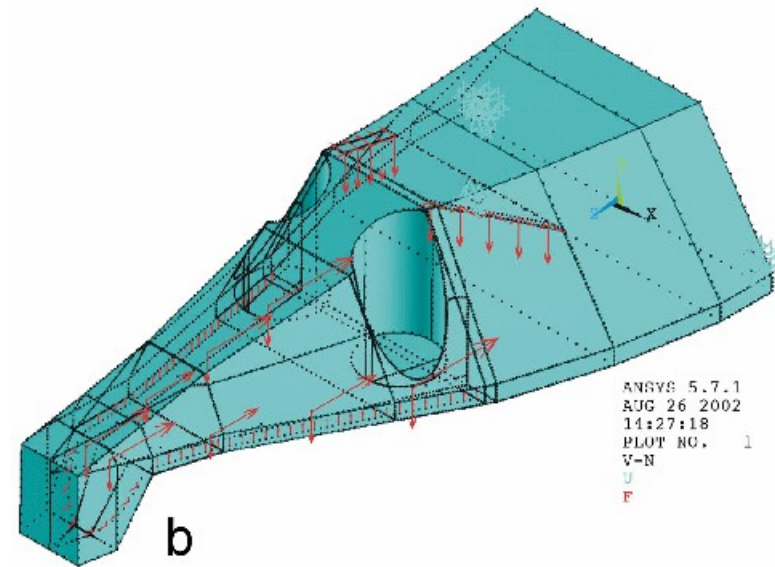
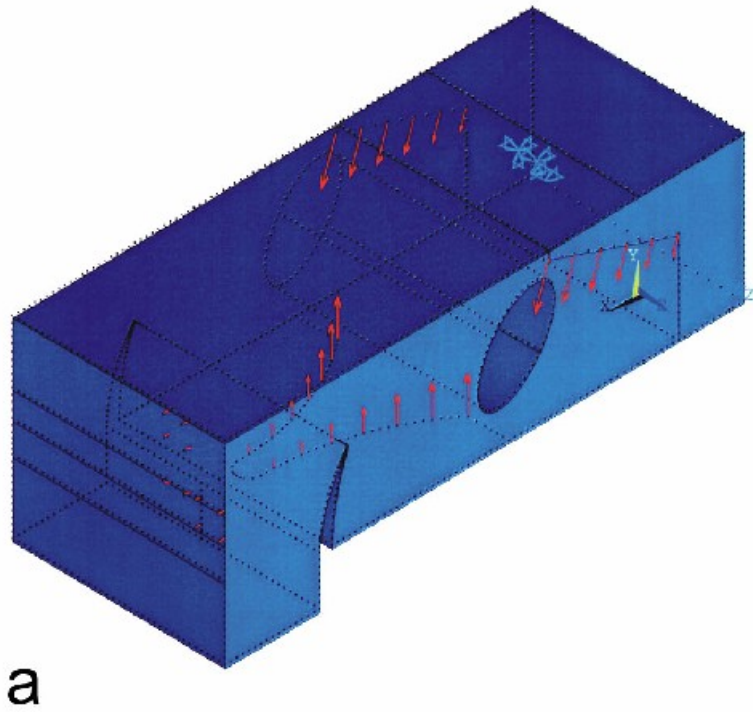


# Proterosuchus

## Bionik I

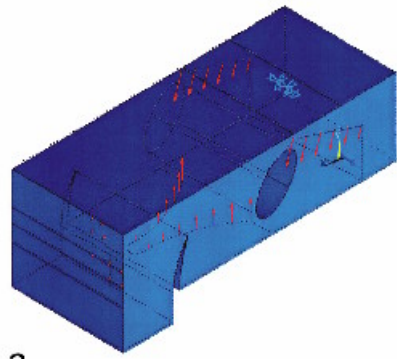




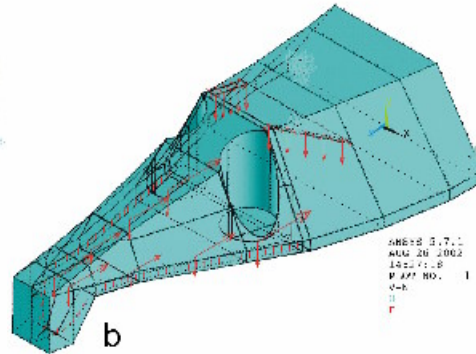


ANSYS 5.7.1  
AUG 26 2002  
11:27:18  
PLOT NO. 1  
V-N  
U  
F

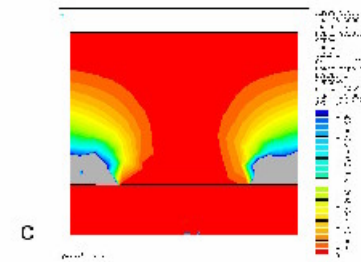




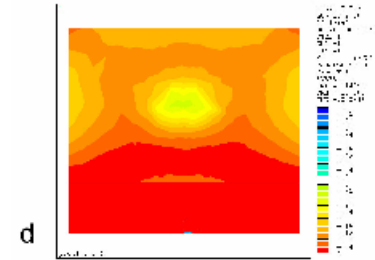
a



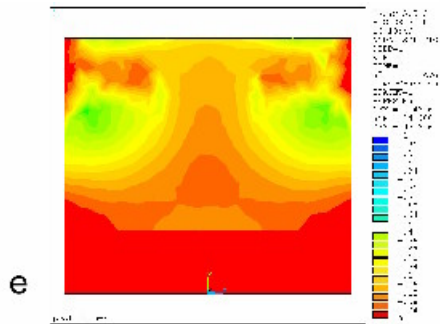
b



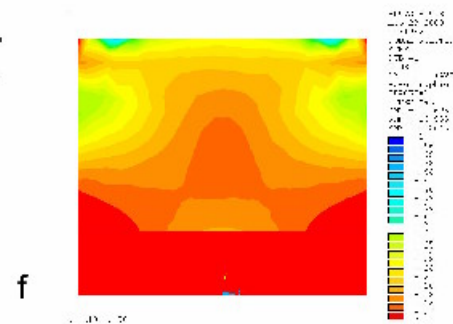
c



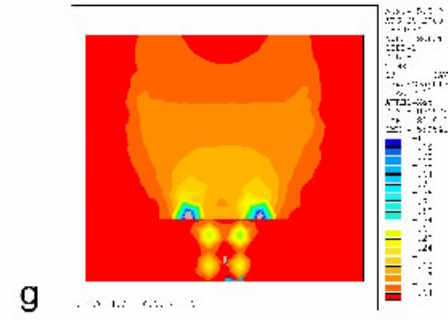
d



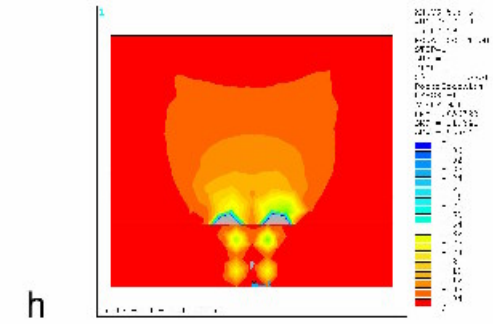
e



f

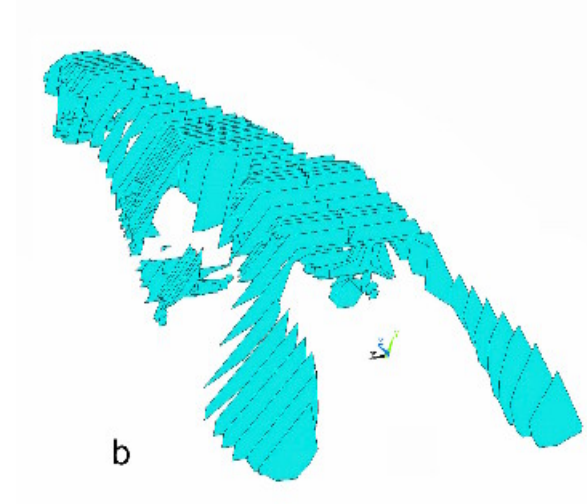
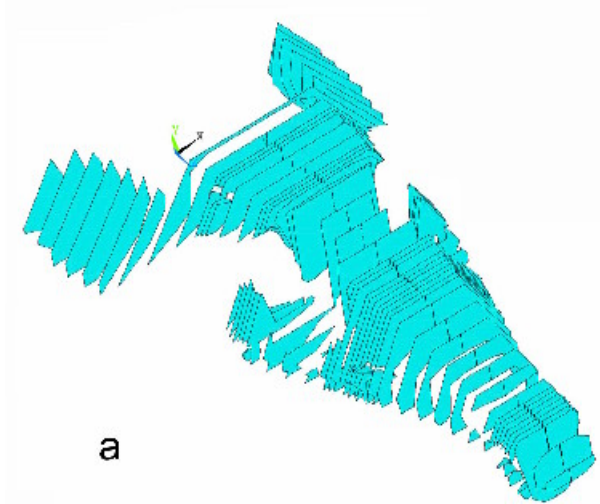


g



h







This document was created with Win2PDF available at <http://www.daneprairie.com>.  
The unregistered version of Win2PDF is for evaluation or non-commercial use only.