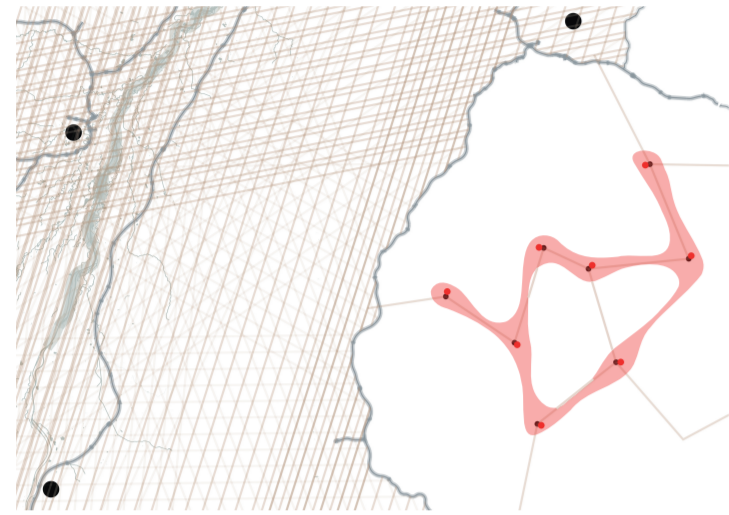


Decision A – Local

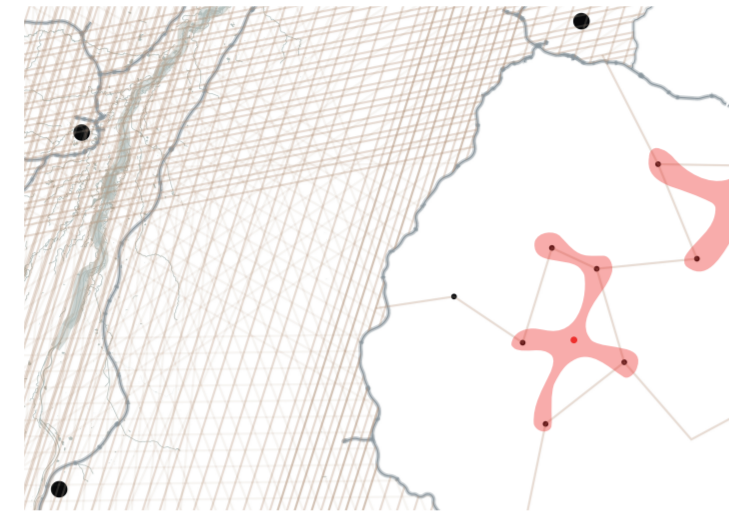


Scheme A identifies common entities among the various settlements and strengthened the current stage by reorganizing or relocating them.

Scheme A operates on a local level by reorganizing the local football league. 13 out of 14 teams are playing in arenas outside the urban, hence no interaction among the citizens and the social event is taking place.

Relocating the football ground and using existing parking spaces at either end of the urban an inevitable discourse will be created. Furthermore the canteen of Trigema (in the case of Burladingen) is only partly used, as production on Saturdays is half. Due to the proximity of the new football location to the canteen and its given infrastructure, both, the Trigema employees and the football fans can suddenly use this space.

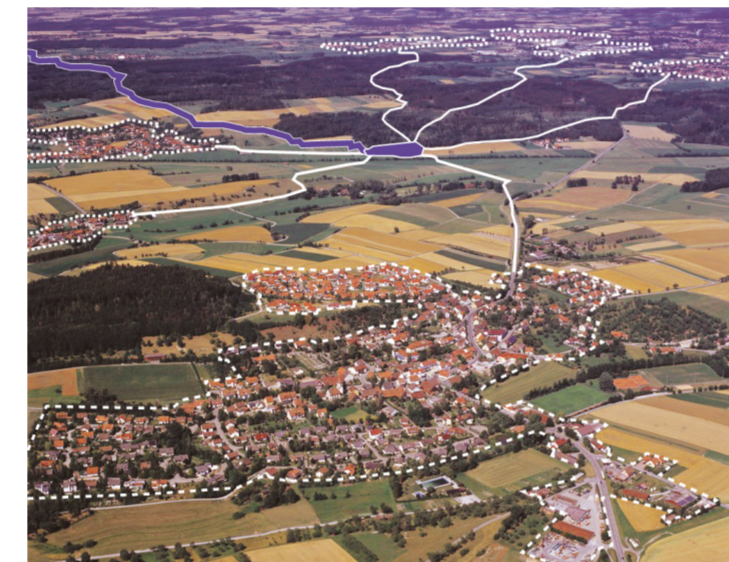
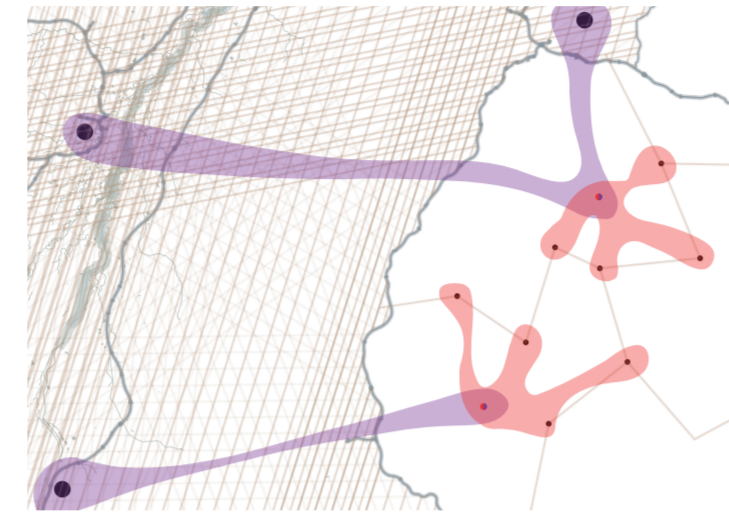
Decision B – Local



Scheme B identifies disconnected entities among the various settlements and strengthened the current stage by merging and reorganizing them.

Scheme B operates on a local level by merging several voluntary fire departments together. In these rural areas the voluntary fire department acts as a social club with a relatively high amount of firemen, little equipment, seldom call of duties and many events. In the case of Burladingen, every district (even small ones with less than 500 inhabitants) are having their own voluntary fire department, resulting from former times, when mobility was not given. This results in an isolation of the various clubs. A merging into a common department will draw a higher effectiveness and capacity in terms of call of duties (still the main responsibility) and a larger community and exchange in its social structures.

Decision C - Cross Territorial

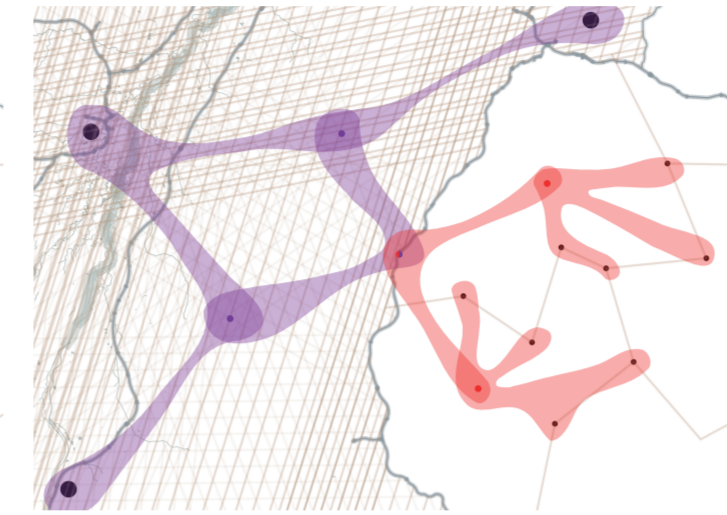


Scheme C identifies an entity that is of need to the current social structures among the settlements and strengthened its position by the discourse triggered.

Scheme C operates on a local level by learning from and collaborating with the metropolitan infrastructure. The area mirrors its singularity also in the concentration and network of golf courses.

Golf courses are both acting as a recreational ground, but also as a social club among a certain clientele. Due to the amount of Mittelstand, a golf club in the area is of need and can stimulate new relations and discourses among the stakeholders. The spatial outline is to reorganize the landscape design of the course to emphasize on the time between greens, so that conversations might be triggered more during games.

Decision D - Cross Territorial

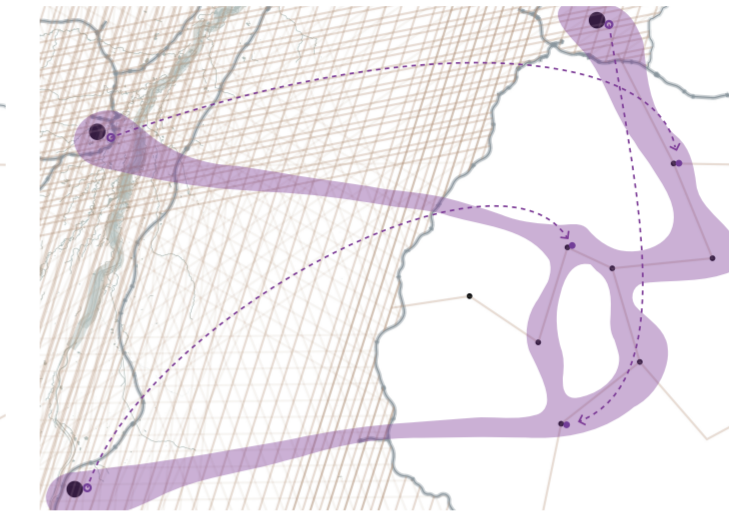


Scheme D identifies a shared entity between both the Mittelstand and the metropolitan area. A territorial network will strengthen the cultural production between both parties.

Scheme D operates on a territorial level with close interaction of the existing cultural infrastructure in visual arts in the metropolitan and a newly established art production network on a local level.

Currently no exchange among the leading art academies and the main institutions, both private and public is taking place. The insertion of smaller intermediate production & exhibition venues can bridge and negotiate among the various stakeholders. This will further more create a close exchange between the two spaces and start a larger discourse in the field of art and citizens.

Decision E – Exchange

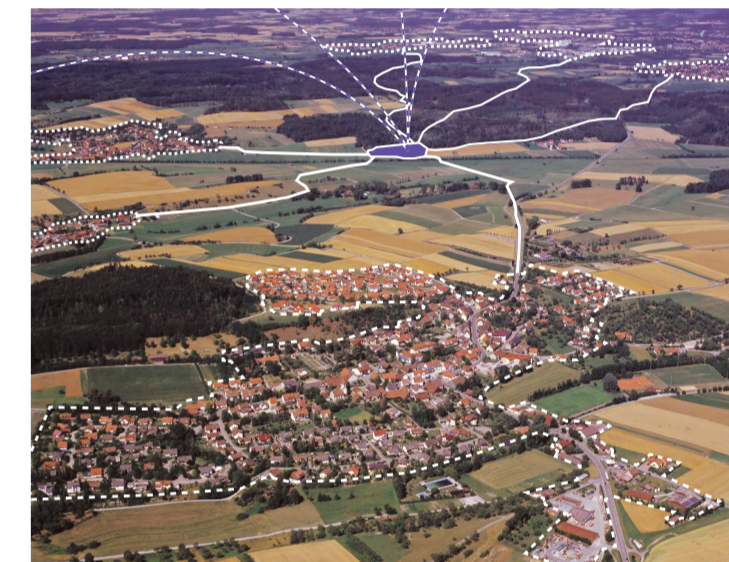
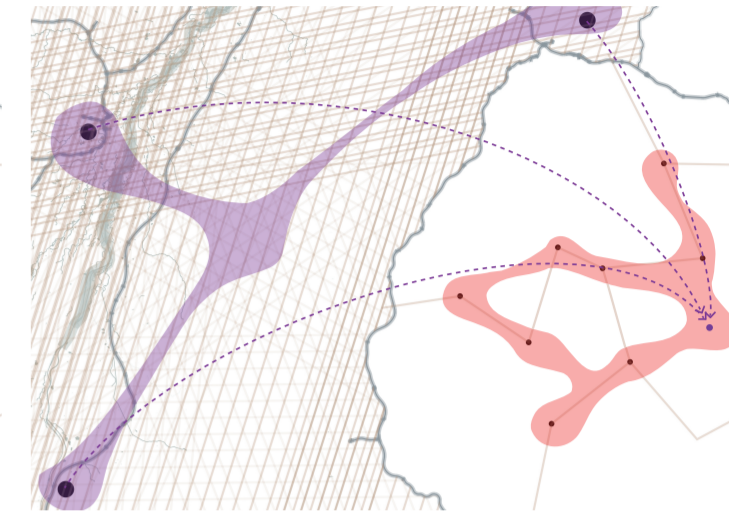


Scheme E identifies entities within the metropolitan area that could be relocated/merged to/with the Mittelstand space, to strengthen the local cultural infrastructure.

Scheme E operates on a territorial level by resolving the spatial problematic in the existing theatres (in the metropolitan) by a newly established local play infrastructure in the rural. A base case study is the successful theatre Lindenhof in Melchingen, which operates to a national level, hence acts as an attractor for 'high culture' and allows this local reconciliation.

Similar institutions will be created through the relocation of theatre companies, allowing the remaining to work immediately with the other structures in the theatre. The relocated companies can then play on the local theatres stages and create local and national discourses.

Decision F – Exchange



Scheme F identifies entities that need support structures, which can be established outside the metropolitan and hence strengthen the local network.

Scheme F operates on a territorial level by merging the archives of the 5 state and university libraries into a shared space in the local realm.

This will create the opportunity to enlarge the desk and working space demanded in all 5 institutions and expand the accessibility of research material. Technically the timeline for receiving an order at the institution does not vary due to a new organisational level. Spatially this new archive can operate as a plug in to the local infrastructure as well. A local knowledge production can be further established by an expansion locally, providing the vast amount of research material in the area.